



WANHOS SOLAR

XIAMEN CHINA

XIAMEN WANHOS SOLAR TECHNOLOGY CO., LTD.

ADD: 605(Bao Tuo Mansion) No. 617, Surabaya Road, Huli District, Xiamen

TEL: 0086-592-5715003 5023035

FAX: 0086-592-5733075

Website: www.wanhos.com E-mail: info@wanhos.com

XIAMEN WANHOS SOLAR TECHNOLOGY CO., LTD



	ABOUT WANHOS SOLAR	01
	PITCHED ROOF RACKING SYSTEM	13
	FLAT ROOF RACKING SYSTEM	19
	AL-GROUND MOUNTING SYSTEM	21
	PILE-GROUND MOUNTING SYSTEM	23
	UB-GROUND MOUNTING SYSTEM	25
	C-STEEL GROUND MOUNTING SYSTEM	27
	POLE MOUNTING SYSTEM	29
	CARPORT MOUNTING SYSTEM	30
	GROUND SCREWS	31
	FASTENER PV ONLY	32

About WANHOS SOLAR

Company Outlook



- First-Class Service
- Excellent Quality

Certificates



Manufacturing Process



Material



Extrusion



Forming



Cutting



Punching



Assembly

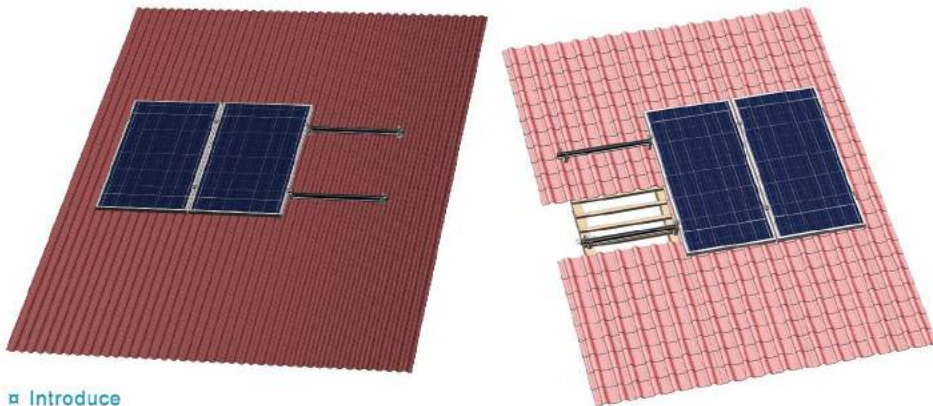


Packaging



Loading

PITCHED ROOF RACKING SYSTEM



Introduce

Pitched Roof Racking System designs with great flexibility both for commercial and residential roof solar system. It is suitable for installing framed and frameless modules flushed to the pitched roof. Series product have the innovated design of SR Rail and D module making the installation more easily and quickly. High pre-assembly parts and customized solution to save your install time and money. Wanhos Solar have the excellent engineer team and quality management system to provide the perfect service. Wanhos Solar, your best choice.

Benefits

Easy Installation

D-module can be put into SR-Rail from any position. So the parts can be pre-assembly on factory to save your installation time on site.

Flexibility and Compatible

SR-Rail and its accessories can be installed with the most solar panels on the difference condition.

Safety and Reliability

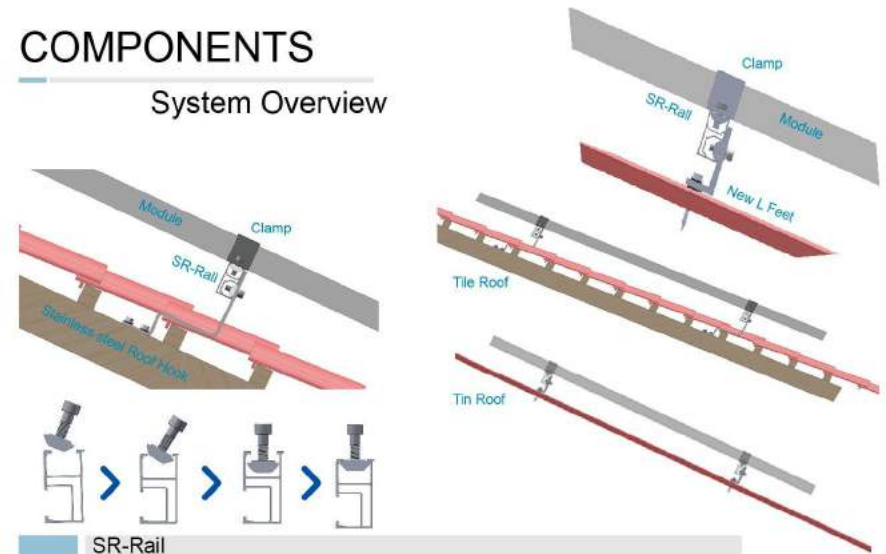
The racking systems can stand up to the extreme weather complied with the AS/NZS 1170 and other international structure load standards by skilled engineers. The main support components have also been tested to guarantee its structure and load-carrying capacity.

Technical Information

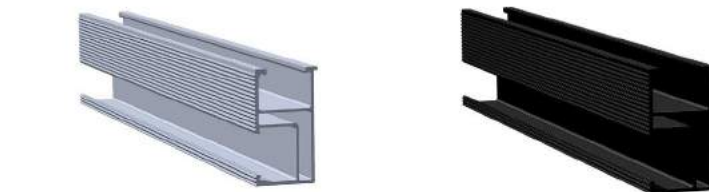
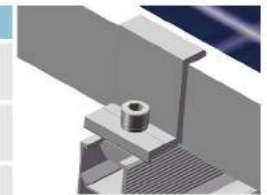
Install Site	Pitched Roof
Tilt Angle	Flushed with the roof, up to 60°
Building Height	up to 20m
Max Wind Speed	up to 60m/s
Snow Load	up to 1.4KN/m ²
Standards	AS/NZS 1170 & DIN 1055 & Other
Material	Aluminum alloy & Stainless steel
Color	Natural
Anti-corrosive	Anodized
Warranty	Ten years warranty
Duration	More than 20 years

COMPONENTS

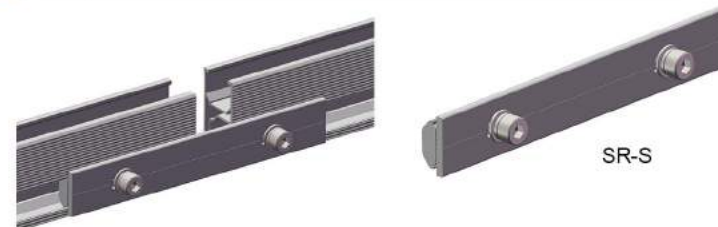
System Overview



Item No.	Description
SR-2560	Rail with a standard length of 2560 mm Designed to mount 3 modules (width 808~826mm)
SR-3400	Rail with a standard length of 3400 mm Designed to mount 4 modules (width 808~826mm)
SR-4200	Rail with a standard length of 4200 mm Designed to mount 4 modules (width 990-996mm)

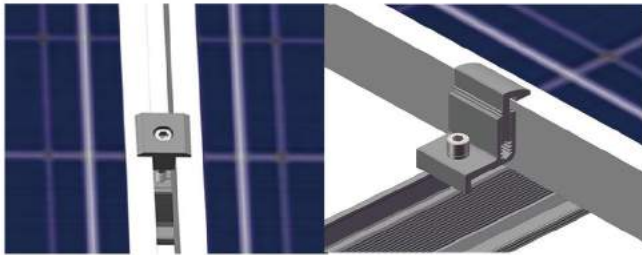


Rail splice kit



COMPONENTS

Framed Module Clamp



Item No.	Description
Inter Clamp Kit	
WIC-F30	Wanhos Inter Clamp Kit 30mm
WIC-F35	Wanhos Inter Clamp Kit 35mm
WIC-F40	Wanhos Inter Clamp Kit 40mm
WIC-F46	Wanhos Inter Clamp Kit 46mm
WIC-F50	Wanhos Inter Clamp Kit 50mm
WIC-F57	Wanhos Inter Clamp Kit 57mm
End Clamp Kit	
WEC-F30	Wanhos End Clamp Kit 30mm
WEC-F35	Wanhos End Clamp Kit 35mm
WEC-F40	Wanhos End Clamp Kit 40mm
WEC-F46	Wanhos End Clamp Kit 46mm
WEC-F50	Wanhos End Clamp Kit 50mm
WEC-F57	Wanhos End Clamp Kit 57mm
WEC-FA	Wanhos Adjustable End Clamp Kit
For the module thickness from 35-60mm	



WIC-F



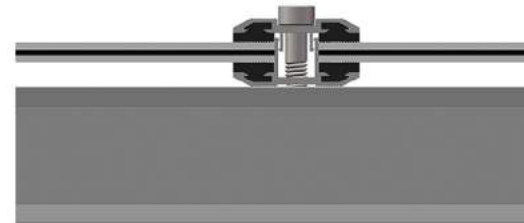
WEC-F



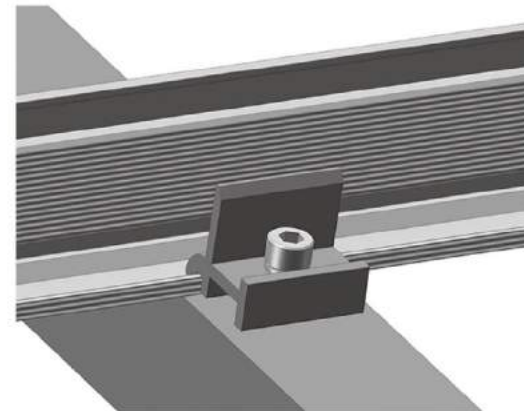
WEC-FA

COMPONENTS

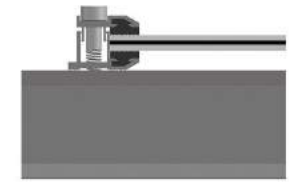
Frameless Module Clamp



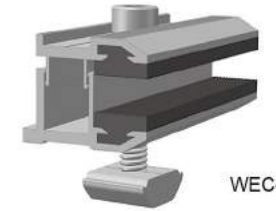
Item No.	Description
WIC-L80	Thin Film Module Inter Clamp
WEC-L80	Thin Film Module End Clamp
WRC-D	SR-Rail Clamp



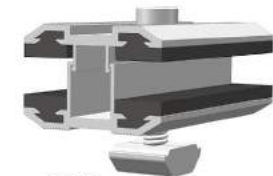
SR-Rail Cross Connect



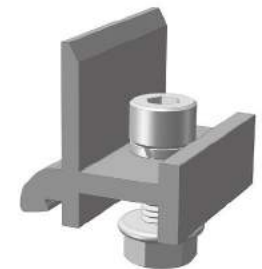
WIC-L



WIC-L

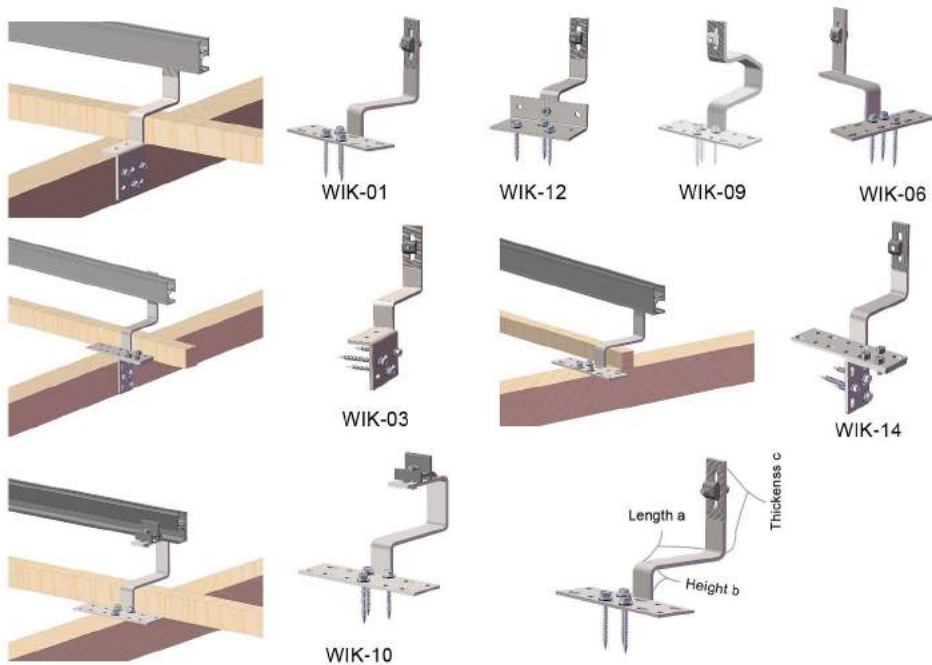


WRC-D



COMPONENTS

Roman Tile Roof Hook



Item No.	Description	Weather Condition	Dimension(mm)		
			a	b	c
WIK-01	Stainless Steel Hook 1# Kit	Normal	101	46	5
WIK-03	Stainless Steel Hook 3# Kit	Normal	101	46	5
WIK-06	Stainless Steel Hook 6# Kit	Normal	101	46	5
WIK-09	Stainless Steel Hook 9# Kit	Heavy Snow Load	101	46	8
WIK-10	Stainless Steel Hook 10# Kit	Normal	101	46	5
WIK-12	Adjustable Stainless Steel Hook 12# Kit	Normal	101	38-50	5
WIK-14	Stainless Steel Hook 14# Kit	Normal	101	-----	5

COMPONENTS

Flat Tile Roof Hook



Item No.	Description	Weather Condition	Dimension(mm)		
			a	b	c
WIK-02	Stainless Steel Hook 2#	Normal	190	30	5
WIK-02-A	Stainless Steel Hook 2# A type	Normal	190	30	5
WIK-02-B	Stainless Steel Hook 2# B type	Normal	190	30	5

Shingle Tile Roof Hook

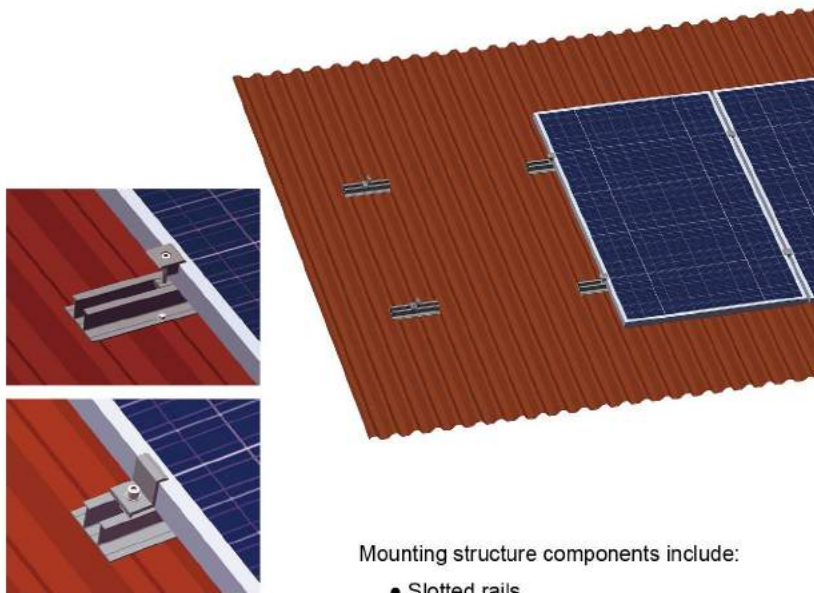


Item No.	Description	Weather Condition	Dimension(mm)		
			a	b	c
WIK-04	Stainless Steel Hook 4#	Normal	200	46	5
WIK-04-A	Stainless Steel Hook 4# A type	Normal	200	46	5
WIK-04-B	Stainless Steel Hook 4# B type	Normal	200	46	5

COMPONENTS

Metal Roofs – Trapezoidal Profile

Suitable for corrugated metal roofs with trapezoidal roof profile-solar panels arranged in portrait mode



WIK-FR

Mounting structure components include:

- Slotted rails
- End and mid clamps
- Rubber gasket
- Nuts and bolts

Above components are made out of anodized al rails riveted to metal roof with self-drilling screws

COMPONENTS

Tin Roof Hook



WIK-05

WIK-H04

WIK-H01-03

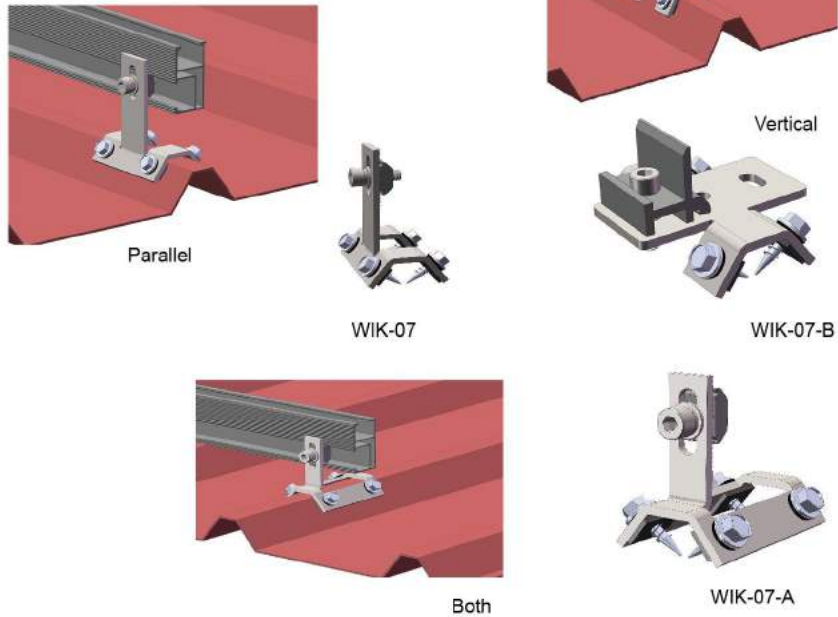
WIK-H05-07

WIK-N05

Item No.	Description	Accessories
WIK-05	Aluminum Tin Interface Kit 5#	Wood Screw M6.3×80
WIK-H01	Hanger Bolt Hook 1#	Hanger bolt M10×200
WIK-H02	Hanger Bolt Hook 2#	Hanger bolt M12×200
WIK-H03	Hanger Bolt Hook 3#	Hanger bolt M12×300
WIK-H04	Hanger Bolt Hook 4#	Hanger bolt M10×200 & L Feet
WIK-H05	Hanger Bolt Hook 5#	Hanger bolt M10×200
WIK-H06	Hanger Bolt Hook 6#	Hanger bolt M12×200
WIK-H07	Hanger Bolt Hook 7#	Hanger bolt M12×300

COMPONENTS

Trapezoid Metal Roof Hook

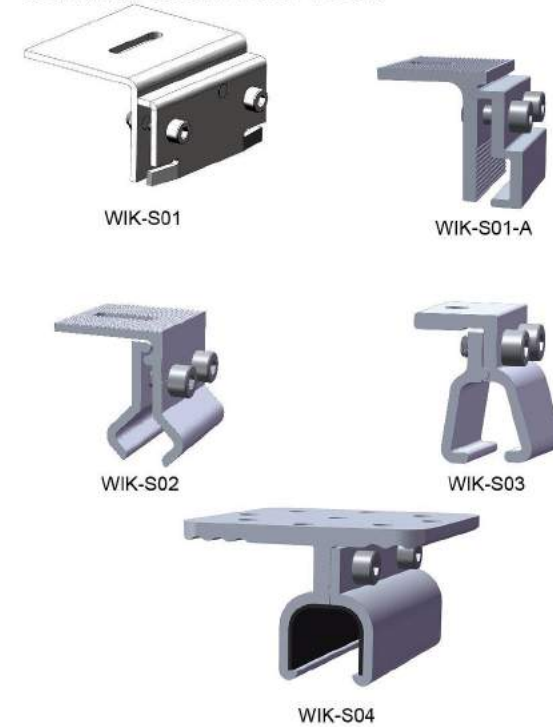


Item No.	Description
WIK-07	Stainless Steel Hook 7#
WIK-07-A	Stainless Steel Hook 7# A type
WIK-07-B	Stainless Steel Hook 7# B type

Note: Standard product is just fitted with the trapezoid roof as right figure shown other size must consider the mould cost.

COMPONENTS

Standing Seam Roof Hook



Item No.	Description	Roof Type
WIK-S01	Standing Seam Roof Hook 1#	Standing Seam Roof
WIK-S01-A	Standing Seam Roof Hook 1# A	Standing Seam Roof
WIK-S02	Standing Seam Roof Hook 2#	Standing Seam Roof
WIK-S03	Standing Seam Roof Hook 3#	Standing Seam Roof
WIK-S04	Standing Seam Roof Hook 4#	Standing Seam Roof

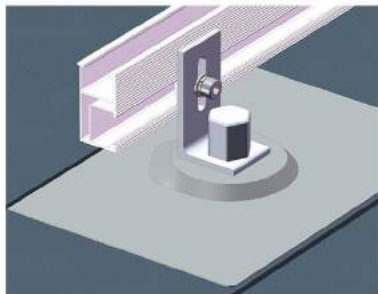
COMPONENTS

Flashing Hook

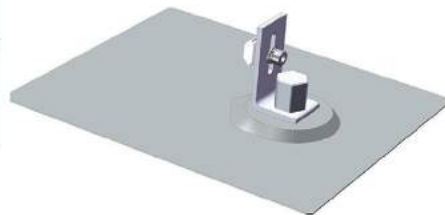
Features

- All-in-one waterproof flashing and mount to anchor photovoltaic racking systems
- Fit with in most composition and wood shingle roof systems
- Non-fading sealing collar
- Not for hot-mopped or built-up roofs
- Do not use paint or petroleum based products on rubber collars

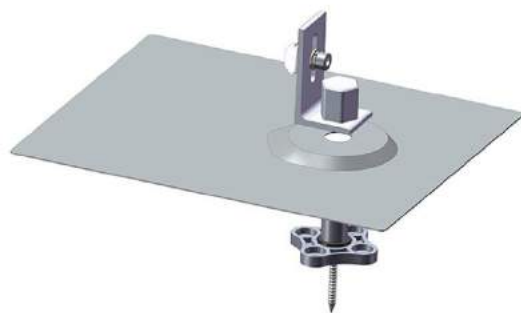
Item No.	Description	Flashing Size
WIK-L11	OD11 L Feet Kit	305x205x1mm



L Feet Kit

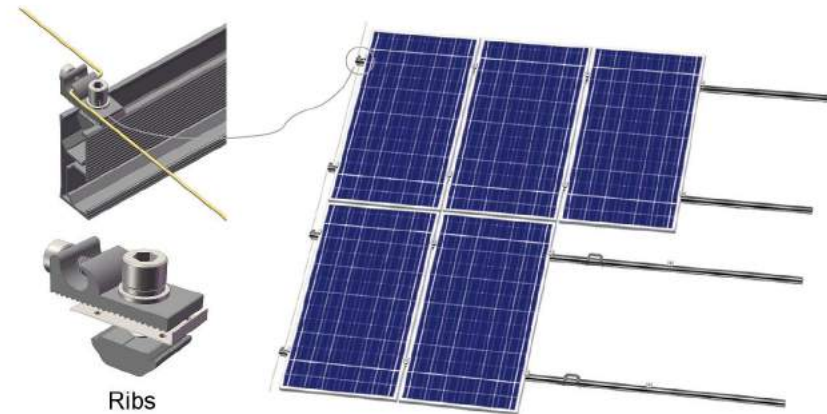


WIK-L 11

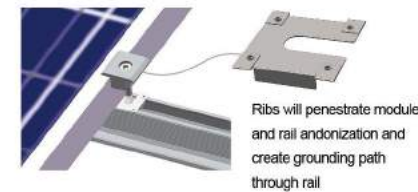


305x205x1mm

SOLAR ARRAY GROUNDING SYSTEM



Ribs



Ribs will penetrate module and rail andonization and create grounding path through rail



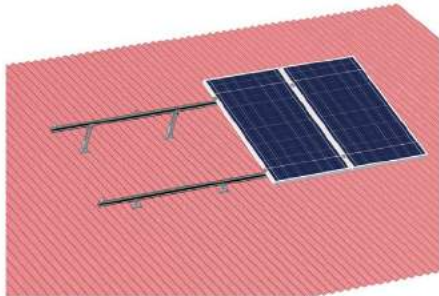
Electrically connect spliced Rails Braided Copper Wire



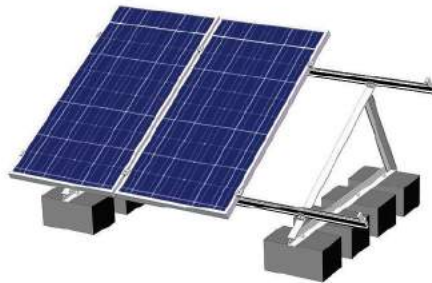
Introduce

Grounding product can be used to bond solar modules to the aluminum rails and the aluminum rails to ground, so that the entire solar system is grounded and safe; Grounding products include the stainless steel grounding clip and aluminum grounding lug, which are all designed to comply with the requirement of AS5033, UL467 for bonding or grounding systems.

FLAT ROOF RACKING SYSTEM



Adjustable System



Fixed System

Introduce

Flat roof racking system is developed to mount the module tilt a certain angle on a flat roof or ground. You can have the fixed or adjustable angle solution as 10-15deg, 15-30deg and 30-60deg according to your exact requirement. Series product have the innovated aluminum rail, D-module, clamps and legs which can be pre-assembly to make the installation easy and quick for saving your labor cost and time. Besides, the customized length of rail will not require onsite weld and cut, keeping the appearance entirety, structural strength and anti-corrosive performance.

Benefits

Easy Installation

D-module can be put into SR-Rail from any position. So the parts can be pre-assembled on factory to save your install time on site.

Flexibility and Compatible

SR-Rail and its accessories can be installed with the most solar panels on the different condition.

Safety and Reliability

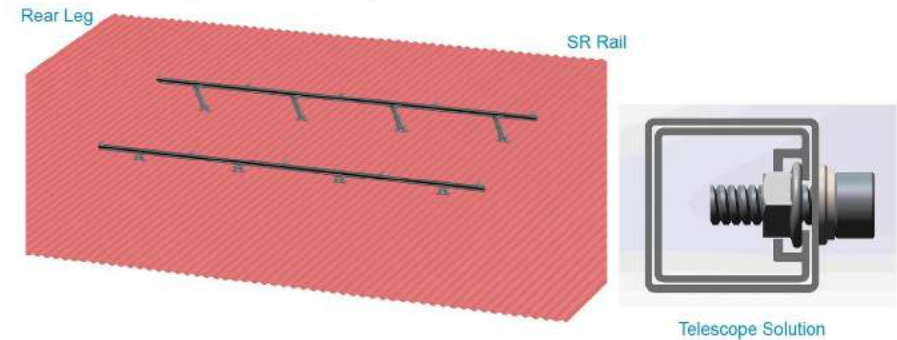
The racking systems can stand up to the extreme weather complied with the AS/NZS 1170 and other international structure load standards by skilled engineers. The main support components have also been tested to guarantee its structure and load-carrying capacity.

Technical Information

Install Site	Low profile roof or open field
Tilt Angle	10deg ~ 60deg
Building Height	up to 20m
Max Wind Speed	up to 60m/s
Snow Load	up to 1.4KN/m ²
Standards	AS/NZS 1170 & TUV & Other
Material	Aluminum alloy & Stainless steel
Color	Natural
Anti-corrosive	Anodized
Warranty	Ten years warranty
Duration	More than 20 years

COMPONENTS

Adjustable Tilt System



Legs



WAD-FL



WAD-RL

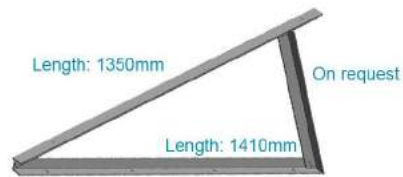
Item No.	Description	Leg Length
WAD-FL	AD Front Leg	
WAD-RL10/15	AD Rear Leg 10/15 deg	240~360mm
WAD-RL15/30	AD Rear Leg 15/30 deg	340~680mm
WAD-RL30/60	AD Rear Leg 30/60 deg	700~1200mm

COMPONENTS

Fold Tri-Bracket System



Fold-Tri-Bracket



Tri-Bracket 1#



Accessories: DR Rail Clamp



Tri-Bracket 2#



Tri-Bracket 3#

Item No.	Description	Module Length	Angle
WFT30-01	Triangle Bracket 1# 30deg	Less than 1.7meter	Fixed 30deg
WFT30-02	Triangle Bracket 2# 30deg	Less than 2meter	Fixed 30deg
WFT30-03	Triangle Bracket 3# 30deg	Less than 1.1meter	Fixed 30deg

Note: Other angle can be customized

WRC-01	SR-Rail Clamp Kit
--------	-------------------

COMPONENTS

AD Tri-Bracket System



AD Fold Tri-Bracket



Adjustable 1# Tri-Bracket



Adjustable 2# Tri-Bracket

Item No.	Description	Module Length	Angle
WAT1-10/15	Adjustable 1# Tri-Bracket 10/15	Less than 1.7meter	10~15deg
WAT1-15/30	Adjustable 1# Tri-Bracket 15/30	Less than 1.7meter	15~30deg
WAT2-10/15	Adjustable 2# Tri-Bracket 10/15	Less than 1.1meter	10~15deg
WAT2-15/30	Adjustable 2# Tri-Bracket 15/30	Less than 1.1meter	15~30deg

BALLASTED MOUNTING SYSTEM



Introduce

Ballasted Mounting System is a highly engineered solution that secures the array without damaging the flat roof. It is compatible with the usual framed modules and typically does not require roof penetrations. Made of lightweight and strong aluminum construction, the ballasted solution components are pre-assembled and pre-cut to prevent corrosion and save your installation time and labor cost.

Benefits

Easy Installation

D-module can be put into SR-Rail from any position. So the parts can be pre-assembled on factory to save your install time on site.

Flexibility and Compatible

SR-Rail and its accessories can be installed with the most solar panels on the different conditions.

Safety and Reliability

The racking systems can stand up to the extreme weather complied with the AS/NZS 1170 and other international structure load standards by skilled engineers. The main support components have also been tested to guarantee its structure and load-carrying capacity.

Technical Information

Install Site	Low profile roof or open field
Tilt Angle	5deg, 10deg, 15deg, 20deg
Building Height	up to 20m
Max Wind Speed	up to 60m/s
Snow Load	up to 1.4KN/m2
Standards	AS/NZS 1170 & TUV & Other
Material	Aluminum alloy & Stainless steel
Color	Natural
Anti-corrosive	Anodized
Warranty	Ten years warranty
Duration	More than 20 years

COMPONENTS

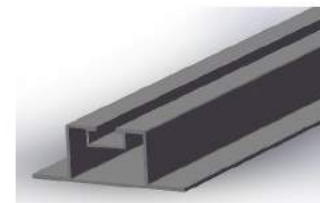
System Overview



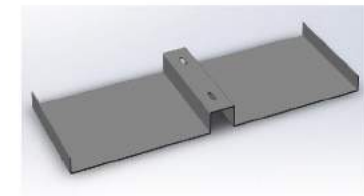
WS-BS-FL



WS-BS-BL



WS-BS-RA



WS-BS-PA

Item No.	Description
WS-BS-FL	Ballasted Front Leg
WS-BS-BL	Ballasted Back Leg
WS-BS-RA	Ballasted Rail
WS-BS-PA	Ballasted Pan

AL-GROUND MOUNTING SYSTEM



Introduce

AL-Ground mounting system is made of 100% aluminum to mount on concrete strip foundations or ground screws. It is featured with light weight, strong structure, and recyclable material.

Wanhos solar AL-Ground Mounting System, with pre-assembled beam, the size of the legs and the B-Rail is manufactured in the factory avoid welding and cut on the spot, saving your time and cost.

Our mission is to simplify your installation and ensure the structure safety. Wanhos Solar your best choice.

Benefits

Easy Installation

D-module can be put into ER-Rail from any position So the parts can be pre-assembled on factory to save your install time on site.

Safety and Reliability

Check and test the structure strictly to against the extreme weather condition.

Flexibility and Compatible

Smart design reduce the difficulty of the installation on the most condition.

10 Years Warranty

Provides a 10-years warranty for the material and structure.

Technical Information

Install Site	Open Field
Max Wind Speed	up to 60m/s
Snow Load	up to 1.4KN/m ²
Module Type	Framed or Frameless
Module Orientation	Portrait
Main material	Anodized Aluminum
Fasten Material	Stainless Steel
Foundation	Concrete With Pre-Buried Bolts Ground Screw

COMPONENTS

System Overview



W Concrete Foundation 2X6

Item No.	Description
WAG-BA-2600	Assembly of Support Beam, 2600mm for 2×Module length 1400-1700mm High Pre-Assembly
WAG-T-700	Front Leg, Square Tube, 700mm
WAG-T-1600	Back Leg, Square Tube, 1600mm
WAG-T-1814	Brace, Square Tube, 1814mm



Cap Type Ground Mounting



WAG-BA-2600



WAG-B



WAG-BC



Item No.	Description
WAG-B	Front and bottom base for AG

PILE GROUND MOUNTING SYSTEM



Introduce

Pile ground system is applied for large commercial and utility PV systems on non-sandy ground, suitable for both framed and frameless module installation.

In pile ground system, open post can be piled into ground 1-2 meters by pile machine quickly, then easily mounting the pre-assembled Al-Beam structure, ER rail with clamps.

Our mission is to simplify your installation and ensure the structure safety. Wanhos Solar, your best choice.

Benefits

Easy Installation

Parts have been high pre-assembly on factory to save your installation time

Safety and Reliability

Check and test the structure strictly to against the extreme weather condition

Flexibility and Adjustable

Smart design to reduce the difficulty of the installation on the most condition

10 Years Warranty

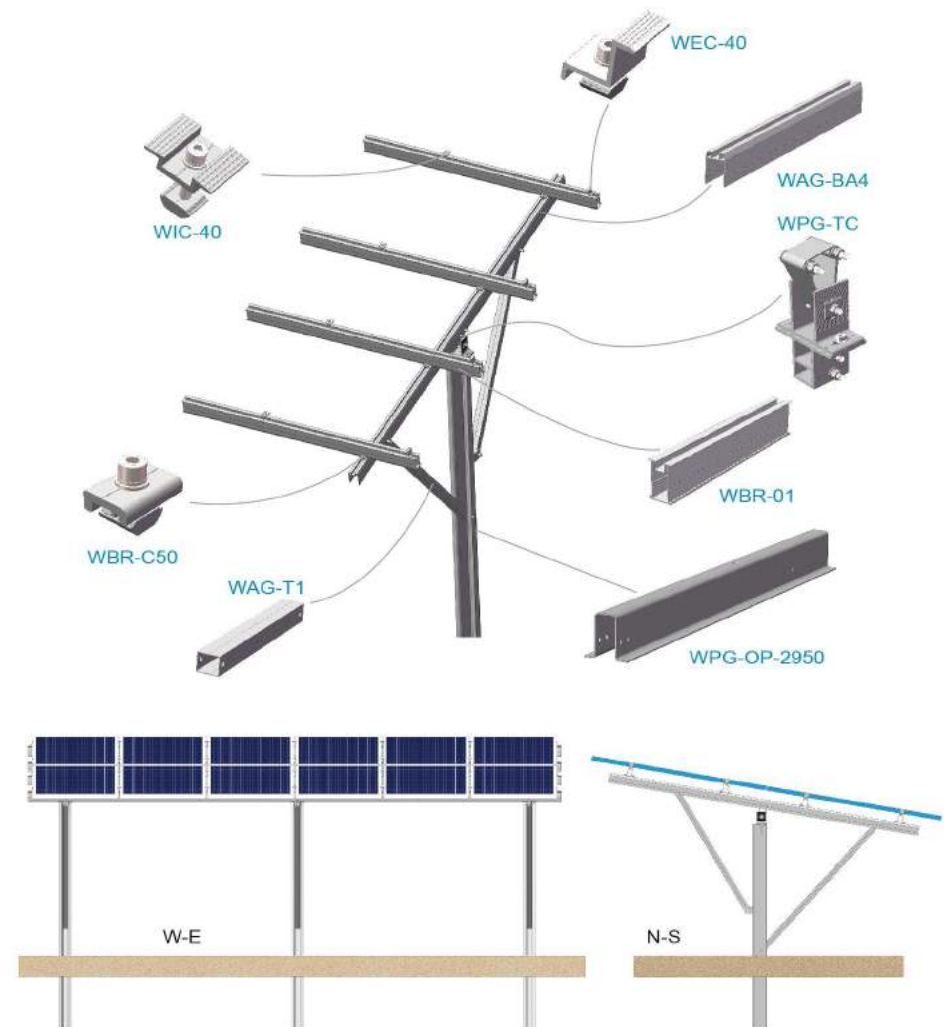
Wanhos Solar provides 10-years warranty for the material and structure

Technical information

Installation site	Open Field
Max wind speed	up to 60m/s
Max snow load	up to 1.4KN/m ²
Module type	Framed or frameless
Module orientation	Portrait
Rail material	Anodized aluminum
Post material	Hot-dip galvanized steel
Adjustability	Post height deviation: 10mm
	Post angle deviation: 2°
Pile driving depth	Post verticality deviation: 2°
	1000-2000mm

COMPONENTS

System Overview



UB GROUND MOUNTING SYSTEM



Introduce

UB-Ground Mounting System is applicable for PV array system on the open fields. The steadiness and safety of this system is with the structural machines and construction acts.

For different foundation solutions, such as concrete with pre-buried bolt, direct buried and ground screw, the system can be modified to install. Materials used include galvanized steel and anodized aluminum, with great anti-corrosion suitable for outdoor using.

Benefits

Easy Installation

Planning and machining in factory to save your time and costs

Safety

Design and check the structure according to the structural machines and installation acts

Excellent Duration

For outdoor using, all the materials selected with high class anti-corrosion protection

Great Flexibility

The ground array can be planned from kilo-watt to megawatt

Technical Information

Install site	Open Field
Tilt Angle	10deg-60deg
Building Height	up to 20m
Max wind speed	up to 60m/s
Max snow load	up to 1.4KN/m ²
Standards	AS/NZS 1170&TUV&other
Material	Aluminum Alloy&Stainless steel
Color	Natural
Anti-corrosion	Anodized and galvanized
Warranty	10 years
Duration	More than 20 years

COMPONENTS

Intergrated Type Ground Mounting

Features

Material and finish: Hot galvanized steel Q235
The leg welded to be integral to reduce the install steps
Foundation option: Concrete foundation



Item No.	Description
WCP-60	Cross pipe OD60
WAS-40/1820	Angle steel brace 1820mm with accessory
WGM-FL985	Front leg 985mm with U-bolt
WGM-BL1990	Back leg 1990mm with U-bolt

Cap Type Ground Mounting



Item No.	Description
WGM-C01	Steel cap 1# for pipe OD60
WGM-C02	Steel cap 2# for pipe OD60
WFA-UB60	U-bolt kit M12×76, dacromet

C-STEEL GROUND MOUNTING SYSTEM



Introduce

C-Steel Ground Mounting System is applicable for PV array system on the open fields. The steadiness and safety of this system is compatible with the structural machines and construction acts.

For different foundation solutions, such as concrete with pre-buried bolt, direct buried and ground screw, the system can be modified to install. Materials used include galvanized steel and anodized aluminum, with great anti-corrosion suitable for outdoor using.

Benefits

Easy Installation

Parts have been high pre-assembly on factory to save your installation time.

Safety and Safety

Design and check the structure according to the structural machines and installation acts.

Excellent Duration

For outdoor using, all the materials selected with high class anti-corrosion protection.

Great Flexibility

The ground array can be planned from kilo-watt to megawatt.

Technical Information

Installation site	Flat roof & Open Field
Max wind speed	up to 60m/s
Max snow load	up to 1.4KN/m ²
Tilt angle	10deg-60deg
Standards	AS/NZS 1170&TUV&other
Material	Anodized aluminum&Galvanized steel
Anti-corrosion	Anodized&Galvanized steel

COMPONENTS

Ground Screw Foundation

Features

Material and finish: Galvanized steel Q235

Foundation: Ground screw



POLE MOUNTING SYSTEM



Introduce

Pole Mounting System is designed to install solar panels on a single pole. According to different conditions, several kinds of solutions are available.

Wanhos Solar Pole Mounting System takes the importance of safety and duration. The systems have been calculated compatible with the structural machines and tested strictly. Materials used include galvanized steel and anodized aluminum, with great anti-corrosion suitable for outdoor using.

Benefits

Easy Installation

Integrated design for the support pole minimizing the time and cost of installation

Safety and Safety

Design and check the structure according to the structural machines and installation acts

Excellent Duration

For outdoor using, all the materials selected with high class anti-corrosion protection

Great Flexibility

Tilt angle can be adjusted according to the actual needs in the installation site.

Technical Information

Installation site	Open Field
Tilt Angle	10deg-60deg
Building Height	up to 20m
Max wind speed	up to 60m/s
Max snow load	up to 1.4KN/m ²
Standards	AS/NZS 1170&TUV&other
Pole material	Galvanized steel
Rail material	Anodized aluminum
Anti-corrosion	Anodized and galvanized
Warranty	10 years

COMPONENTS

POLE MOUNT 2#

Features

Material: Hot galvanized steel Q235
High integrated to reduce the bolt
installation area of moulds: up to 3.2m² (wind speed < 45m/s)
Foundation: Concrete with pre-buried bolt

Item No.	Description
WPM02-01	Pole support for 2pcs mould(1580×808mm) Pole OD89×1490mm×1pc Beam 50×900mm×1pc Adjustable bar×1pc Accessories and fastens

Note: The length of the beam and pole can be customized for different conditions.

Accessories



POLE MOUNT 6#

Features

Material: Hot galvanized steel Q235
High integrated to reduce the bolt
installation area of moulds: up to 8.3m² (wind speed < 45m/s)
Foundation: Concrete with pre-buried bolt

Item No.	Description
WPM06-01	Pole support for 6pcs mould(1580×808mm) Pole OD140×1490mm×1pc Beam 80×1300mm×1pc Purlin C100×2600mm×2pcs Adjustable bar×1pc Accessories and fastens

Note: The length of the purlin, beam and pole can be customized for different conditions.



POLE MOUNT 8#

Features

Material: Hot galvanized steel Q235
High integrated to reduce the bolt
installation area of moulds: up to 11.5m² (wind speed < 45m/s)
Foundation: Concrete with pre-buried bolt

Item No.	Description
WPM08-01	Pole support for 8pcs mould(1580×808mm) Pole OD165×1490mm×1pc Beam 100×1800mm×1pc Purlin C100×2600mm×3pcs Adjustable bar×1pc Accessories and fastens

Note: The length of the purlin, beam and pole can be customized for different conditions.



CARPORT MOUNTING SYSTEM



Carport mounting system adopts high-strength AL6005-T5, some components are pre-assembled in factory, so that to reduce labor costs and construction time on site.

Features:

- ★ Excellent water-proof performance
- ★ High anti-corrosion property, light and high intensity
- ★ Build on parking lot, saving land resources
- ★ Customized

Technical information

Installation site	Outside
Max wind speed	up to 42m/s
Max snow load	up to 1.4KN/m ²
Installation angle	5°-15°
Span (E-W)	5000mm
Standard ground clearance	2500mm
Panel array	Landscape
Rows	4/5/6
Material	Aluminum(AL6005-T5)
Warranty	10 years



GROUND SCREW

Introduce

Wanhos Solar has developed different series of screws to meet varied applications and lands. The material is high quality Q235, with the surface treatment: hot-galvanization, so that to make sure the excellent anti-corrosion and 20 years duration.



Common ground screw:
Applicable for ordinary ground



Adjustable ground screw:
Applicable for uneven land



Ground screw with large blades:
Applicable for mellow or sandy ground



Ground stake:
Applicable for hard soil

Manufacturing process



Technical Information

Install Site	All Type of Soil
Pipe Material	Q235B
Pipe Diameter	48 ~ 89mm
Pipe Length	600 ~ 3000mm
Pipe Thickness	2 ~ 4mm
Standard	GB50021-2001 GB50007-2002 GB50011-2001
Anti-corrosive	Hot-dip Galvanized



FASTENER PV ONLY



HEX CAP SCREW
Material: SUS304 A2
Size: M3—M45 3/16"—1-1/2"
Length: 8mm-200
Standard: DIN,ASME,ANSI,JIS,ISO,GB



SOCKET SCREW
Material: SUS304 A2
Size: M3—M24 3/16"—1"
Length: 8mm—150mm
Standard: DIN,ASME,ANSI



CARRIAGE BOLT
Material: SUS304 A2
Size: M3—M12 3/16"—1/2"
Length: 16mm—150mm
Standard: DIN,ASME,ANSI



THREAD ROD AND STUD
Material: SUS304 A2
Size: M4—M45 3/16"—1-1/2"
Length: 10mm—6000mm
Standard: DIN,ASME,ANSI



EXP ANSION BOLT
Material: SUS304 A2
Size: M6—M12
Length: 65mm—250mm
Standard: DIN



HEX NUT
Material: SUS304 A2
Size: M2—M52 1/4"—1-1/2"
Standard: DIN,ASME,ANSI,JIS,GB



FLANGE NUT
Material: SUS304 A2
Size: M2—M16 1/4"—5/8"
Standard: DIN,ASME,ANSI



DOME NUT
Material: SUS304 A2
Size: M2—M42 3/16"—1-3/4"
Standard: DIN,ASME,ANSI



NYLON NUT
Material: SUS304 A2
Size: M2.5—M36 3/16"—1-3/4"
Standard: DIN,ASME,ANSI



WING NUT
Material: SUS304 A2
Size: M4—M12 1/4"—3/8"
Standard: DIN,ASME,ANSI



SPRING WASHER
Material: SUS304 A2
Size: 3—42 1/8"—1-1/2"
Standard: DIN,SAE,USS



FLAT WASHER
Material: SUS304 A2
Size: 2—38 1/8"—1-1/2"
Standard: DIN,SAE,USS

PROJECT CASE

